

Safeguarding Newsletter

Cornwall and Isles of Scilly Safeguarding
Children Partnership

Issue 2/June 2017

Learning Lessons Workshop

Tuesday 13 June at St Erme

SIGNS OF SAFETY

Signs of Safety is the core **multi-agency** approach to working with families in Cornwall and the Isles of Scilly managing risk where children are in need of help and protection.

In this session you will learn about the Signs of Safety approach, hear from practitioners about the impact of Signs of Safety on their work, and practice some of the core aspects of the model in group discussions.

Information presented at the workshops will be available to download from the SCP website – www.safechildren-cios.co.uk after the events.

**Helping and protecting
the most vulnerable
children and young people**

Implementing signs of safety



Inside this issue:

Next workshop	1
Signs of Safety Information	2
Share Aware	3
Upcoming SCP events	4

What to do if you are worried about a child -

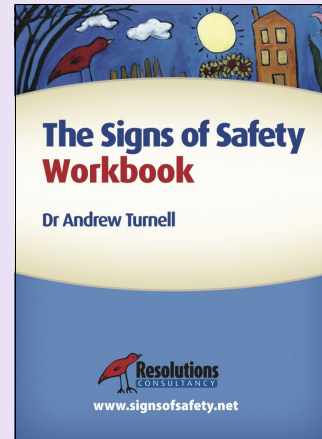
Contact the Multi-Agency Referral Unit (MARU) on 0300 123 1116

What to do if you are worried about a child on the Isles of Scilly

Contact Children's Social Care on 01720 424354

The Signs of Safety Approach

The Signs of Safety approach was developed by Turnell and Edwards and seeks to elicit the existing strengths, safety and goals of the family/extended family that can contribute to better planning and achievement of safety for the child/young person. The approach promotes the careful assessment of risks and considers the ideas, competencies, existing safety and goals of the family/extended family. The approach is designed as a practical method of fostering a cooperative relationship between workers and family/extended family. The approach is designed to be used from commencement through to case closure and to assist professionals at all stages of the child protection process.



www.signsofsafety.net

The Signs of Safety model is an approach created by practitioners, based on what they know works with difficult cases. The essence of the tool is to consider the indicators of danger/harm alongside the indicators of safety and strengths and then make an overall judgment using a safety scale. The aim of the approach is to increase safety for the child/young person by using the strengths and resources that the family has to address the areas of danger or harm. This turns strengths into protective factors and over time workers will establish if these can become demonstrable 'signs of safety'. The approach has been adopted internationally and is an **evolving** model.



Who should attend the workshop?

"I know about Signs of Safety—will there be anything new?"

Signs of Safety is an evolving tool. As it is used increasingly across a wide range of areas and populations it is being responsively developed—keep up to date with how it is being used here.

"I've been using Signs of Safety for ages. Does this workshop have anything for me?"

As we use this tool over time, we also diverge from the integrity of the model in how we use it.

Attend the workshop to refresh your practice in using the tool.

"I am a partner agency and we do not routinely use Signs of Safety"

Attend the workshop to understand how the tool is used in assessment and in the Child Protection planning process to learn the language and increase your confidence at Child Protection Conferences.



Unfortunately the Health briefing is not available for this issue, but it will be back next time!



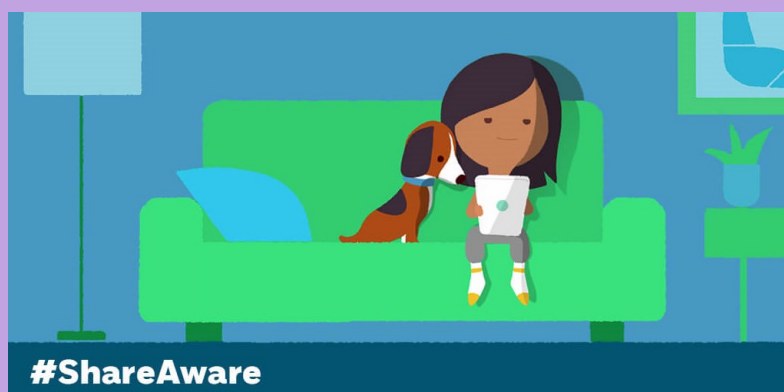
Share Aware

Share Aware, from NSPCC and O2, gives parents all the tools they need to have regular and informed conversations with their child about staying safe online. Under 20% of parents discuss online safety regularly with their children but we want to get every family talking about their child's life online, just as they would their day at school.

Parents can sign up to the [Icebreaker email series](#) and become an expert in their child's online world in 6 weeks, follow our [four simple steps](#) to keeping kids safe online, watch our film '[Safety advice from a 10 year old](#)' or visit [Net Aware](#) – our guide to your child's social networks, apps and games.

The internet is a great place for kids to be, being Share Aware makes it safer.

Just like in real life, kids need our help to stay safe online. Teach your child to be #ShareAware with @NSPCC and @O2 <https://www.nspcc.org.uk/preventing-abuse/keeping-children-safe/share-aware/>



[Teaching resources](#) – Download Share Aware teaching resources for use in the classroom.

[Specialised advice](#) - Advisors at our O2 & NSPCC Online Safety Helpline – 0808 800 5002 – are here to help with any questions, or anyone can make an appointment with a Guru in store.

If you suspect child abuse or neglect, contact the Cornwall Multi Agency Referral Unit on 0300 123 1116 or the Isles of Scilly Children's Social Care Department on 01720 424354.



The SCP Learning Group

Invites you to attend a

Learning Lessons Workshop

Tuesday 13 June 2017

At St Erme Community Centre

(Session 1) 9:30am to 12:30pm

(Session 2) 13:30pm to 16:30pm (repeat of session 1)

Tea and coffee available from 9:00am & 13:00pm

Dates to put in your diaries:

Multi-agency Workshops — The role of the Child Protection Conferences

10th July — Heartlands

12th July — Victoria Offices, Roche

13th July — Trethorne Leisure, Launceston

Learning Lessons Workshop

17th October 2017 – St Erme Community Centre

(booking arrangements will be placed on the SCP website, in due course)



The CIOSSP Learning Group welcomes your feedback and comments on any improvements, information we can incorporate in our termly Safeguarding Newsletter.

Please contact us on: ciosscblearning-group@cornwall.gov.uk

Please email us providing contributions / comments on what is happening within your own individual agencies around Safeguarding ciosscblearninggroup@cornwall.gov.uk